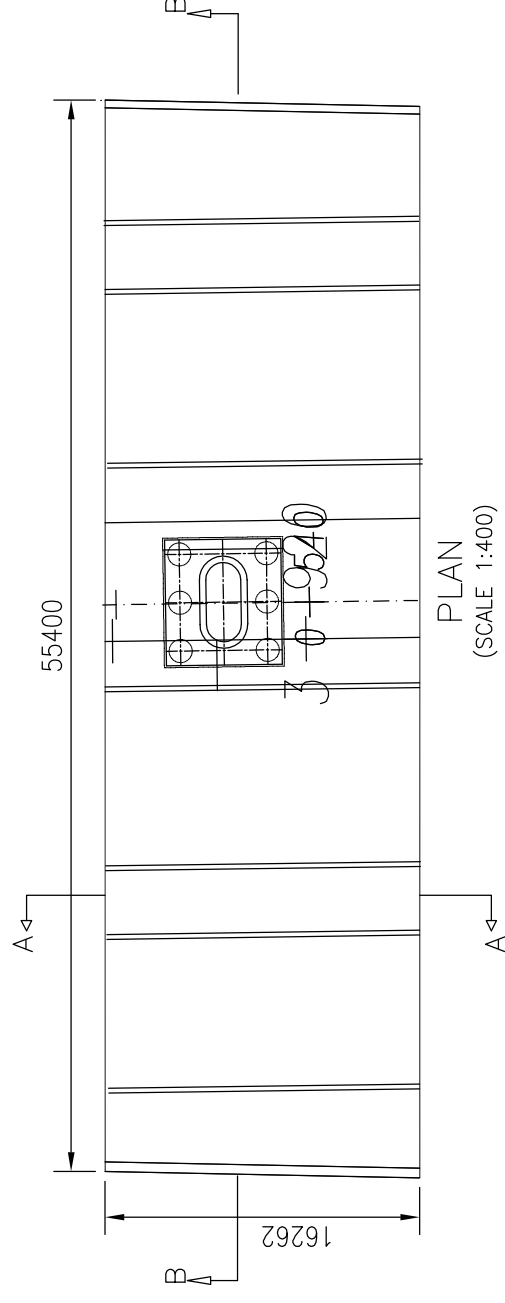
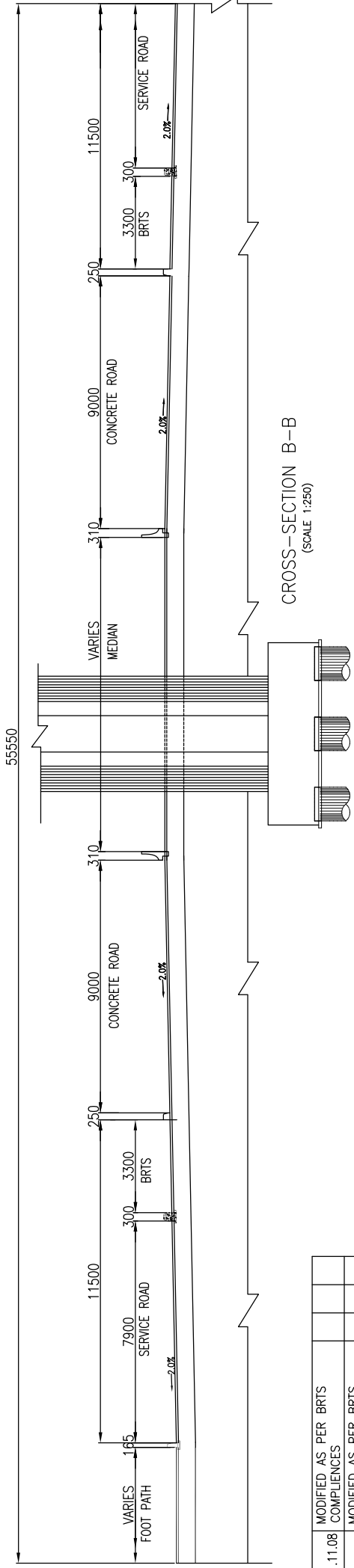


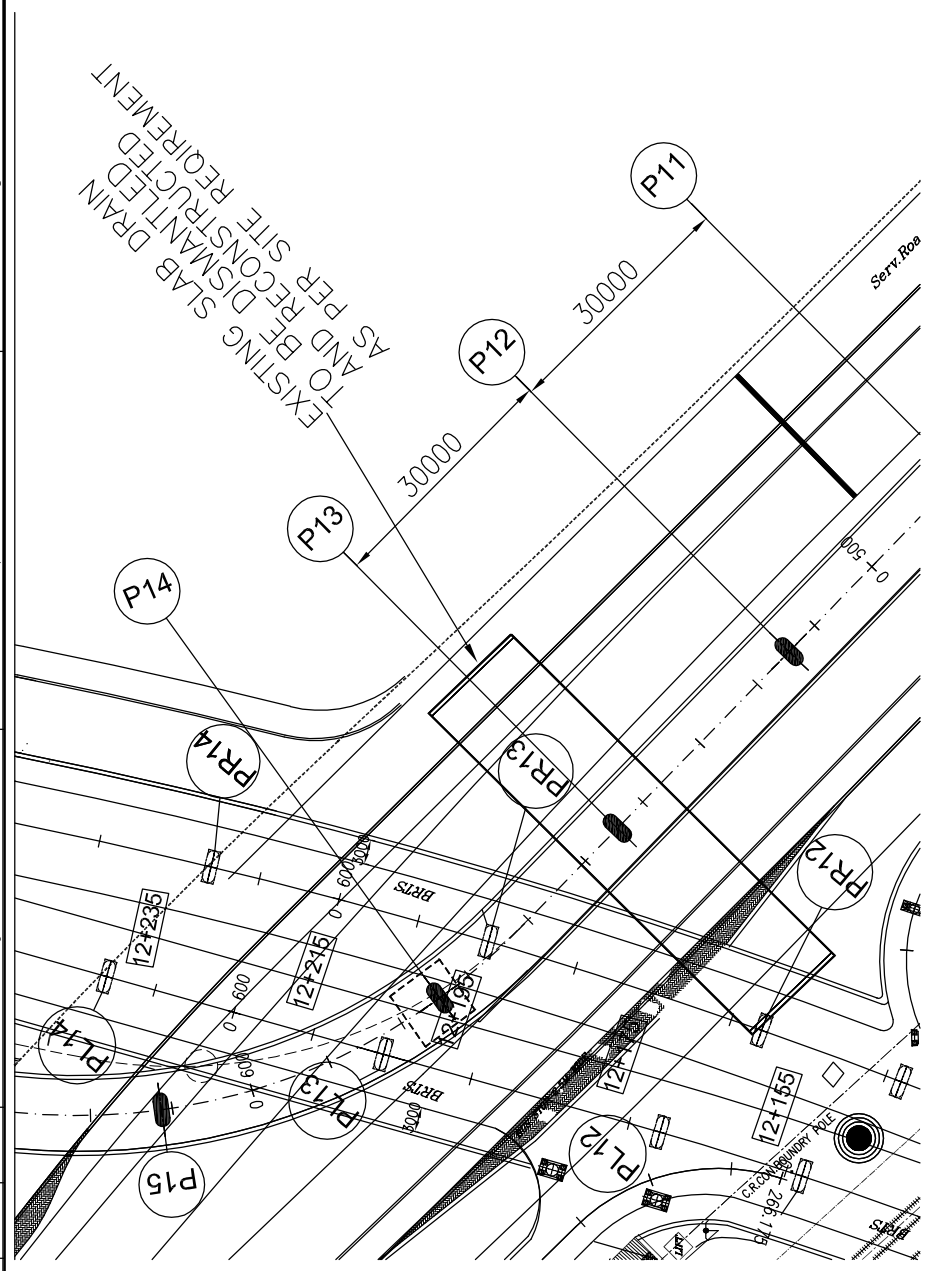
SECTION A-A (OF PROPOSED STRUCTURE)
SCALE - 1:125



PLAN
(SCALE 1:400)



CROSS-SECTION B-B
(SCALE 1:250)



NOTES:

1. ALL DIMENSION ARE IN MM AND LEVELS ARE IN M.
2. DRAWING SHALL NOT BE SCALED.
3. THIS DRAWING SHOULD BE READ WITH LATEST REVISION OF DRAWING NO.2005191/GAD-04 AND 2005191/ALIGNMENT PLAN-01.

CITY ENGINEER
PIMPRI CHINCHWAD MUNICIPAL CORPORATION
PIMPRI, PUNE - 411 018.

EXECUTIVE ENGINEER (PROJECTS)
PIMPRI CHINCHWAD MUNICIPAL CORPORATION
PIMPRI, PUNE - 411 018.

DRG.NO.2005191/SLAB CULVERT/CH-0+540 -09	PURPOSE FOR TENDER
REVISION NO: R-0	DATE:10-07-07
DRAWN BY(A)	CHECKED (B)
BY(MANU)	APPROVED (C)
RUPALI CHAVAN (M.A. SURYAWANSHI)	M.K.GANGULI
AS SHOWN	AS SHOWN

TITLE:
GENERAL ARRANGEMENT DRAWING
FOR SOLID SLAB AT CH. 0+540

NAME OF WORK:
DESIGN AND CONSTRUCTION OF FLYOVER
AND ROB AT NASHIK PHATA ON OLD MUMBAI
PUNE NH-4 INCLUDING BRIDGE ON RIVER
PAWANA.

CLIENT:-
PIMPRI CHINCHWAD MUNICIPAL CORPORATION
PIMPRI PUNE - 411 018.
PH.:+91-20-27425511 FAX:+91-20-27425600
E-mail:pcmc@vsnl.com Web: www.pcmc.org

CONSULTANT:-
HE CONSULTING ENGINEERING SERVICES (I) PVT LTD
41-A, MAKER TOWER, 'E', CUFFE PARADE, MUMBAI-400 005.
E-mail:ces@vsnl.com Web: www.cesinter.com
PUNE OFFICE: TELEFAX: 020-25434626 e-mail: ces_pune@vsnl.com
MUMBAI PUNE NEW DELHI

REV	DATE	DESCRIPTION OF REVISION	A	B	C	INITIALS
R-21.11.08		MODIFIED AS PER BRTS COMPLIENCES				
R-22.09.08		MODIFIED AS PER BRTS COMPLIENCES				
R-24.12.07		MODIFIED AS PER CHANGES SUGGESTED BY RLYS AND NHAI				
R-17.10.07		MODIFIED AS PER CHANGES SUGGESTED BY RLYS AND NHAI				
R-010.07.07		FOR CONSTRUCTION				